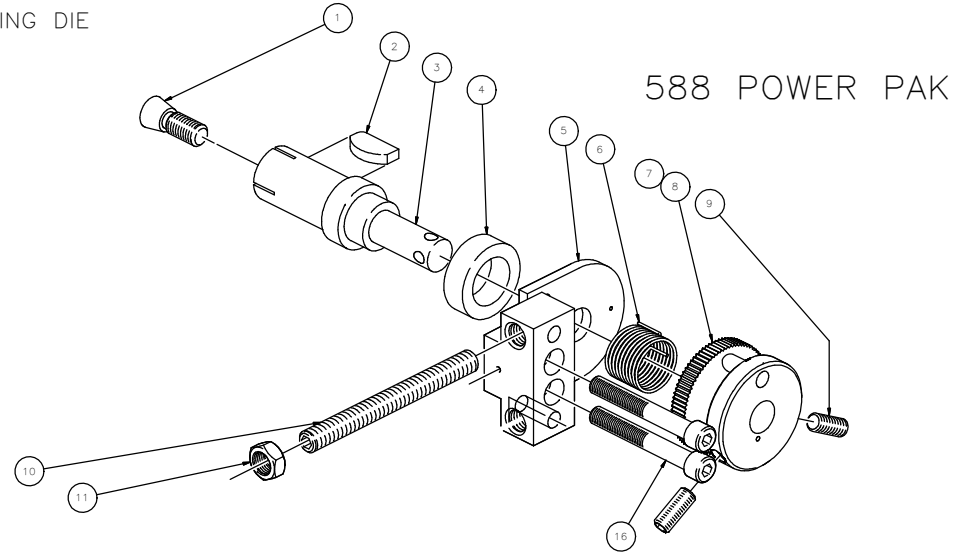
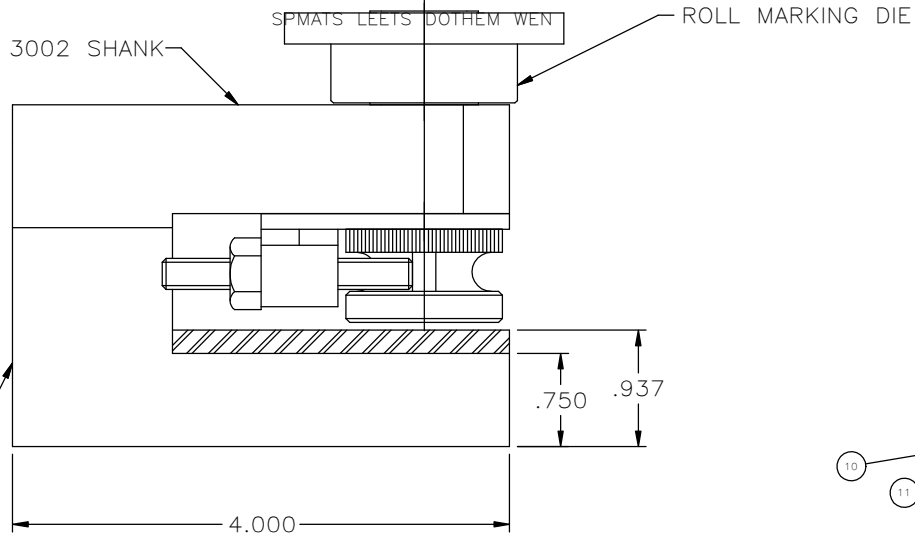


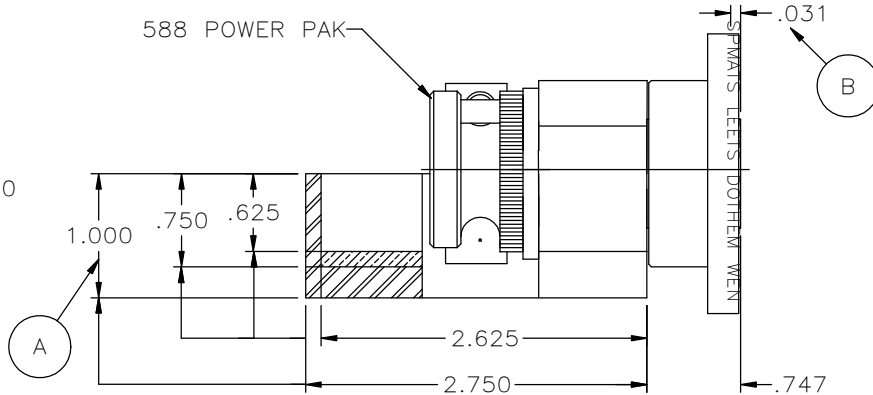
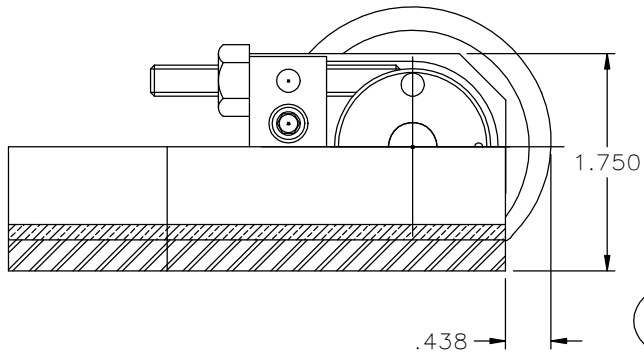
NM951C-B

LIMITS ON ALL FRACTIONAL FINISH DIMENSIONS ± .010 UNLESS OTHERWISE SPECIFIED. DO NOT SCALE—REMOVE ALL SHARP EDGES REPORT ALL CHANGES TO ENGINEERING DEPT.

USED ON
MAZAK
OKUMA
MIYANO
HITACHI
HARDINGE CONQUEST
STAR
MORI-SEIKI



3001 SHANK



ITEM#	DAT. #	QTY	DESCRIPTION
16	1229	2	SOCKET HEAD CAP SCREW
11	1018	1	JAM NUT
10	1019	1	SET SCREW
9	1015	2	SET SCREW
8	1002	1	STOP PIN
7	1001	1	CAP
6	1006	1	SPRING, ROLL RETURN
5	1457	1	BLOCK & PLATE ASSY
4	1029	1	BUSHING
3	1754	1	AXLE
2	-	1	#6 WOODRUFF KEY
1	050-A	1	TAPER SCREW

NOTE: (A) SPECIFY CENTERLINE HEIGHT REQUIRED  
 (B) DISTANCE TO MARKING WITH SOLID ROLL DIE FROM COLLET, WITH 541 RETAINER DIMENSION IS: .375 TO C/L OF CHAR.

LET	CHANGE	DATE	CHECKED	B.C.	DATE	06/12/95	SCALE	FULL	NEW METHOD STEEL STAMPS, INC. FRASER MICHIGAN	NAME ROLL MARK ATTACH
LET	CHANGE	DATE	CHECKED	B.C.	DATE	06/12/95	SCALE	FULL	MAT'L. MFG.'S STD. QTY. 1	PART NO. NM951C_ -B
LET	CHANGE	DATE	CHECKED	B.C.	DATE	06/12/95	SCALE	FULL	ROCKWELL R <sub>C</sub> SCALE MFG.'S STD.	
LET	CHANGE	DATE	CHECKED	B.C.	DATE	06/12/95	SCALE	FULL	HEAT TREAT BLACK-OXIDE	